

Trawler

— C A T A M A R A N S —

by
Fountain Pajot



Power Multihulls 2011 / 2012



About Us

Multihull Solutions is Australia and New Zealand’s leading offshore and cruising multihull specialist.

With a range of new multihulls from international names including Catana, Sunreef Yachts, Fontaine Pajot, Trawler Catamarans and NEEL Trimarans, we bring a new level of service and choice to this specialist market.

In addition to its range of premier new boats, Multihull Solutions has a quality Pre-Owned Brokerage with an extensive array of multihulls priced from AUD\$250,000 to \$10 million.

If you are considering investing in the charter industry, we also offer a comprehensive range of multihulls in some of the most exotic locations in the world. Explore our various charter yacht investment options that represent a sensible and balanced lifestyle investment with fixed and variable income options.

Powered by an absolute commitment to providing the very best service and advice, the Multihull Solutions team comprises some of the most experienced and best people in this area of the industry.

Multihull Solutions also provides a comprehensive Services Division that can assist with all aspects of multihull ownership and operation, including:

- Tuition and sail training;
- Insurance and ocean passage cover;
- Shipping and transport facilitation;
- Vessel management and maintenance;
- Refitting and custom design;
- Relocations, deliveries and much more.



Trawler Catamarans	4-7
Yacht Models	8-9
Power Cruising Range	
Highland 35 Pilot information	10-11
Highland 35 Pilot specifications	12-13
Summerland 40 information	14-15
Summerland 40 specifications	16-17
Flagship Class	
Cumberland 46 information	18-19
Cumberland 46 specifications	20-21
Queensland 55 information	22-23
Queensland 55 specifications	24-25
Putting your boat in charter	26-29
Summary	30

Trawler Catamarans



All Trawler Catamarans have been designed with standard features across the range that maximise performance, comfort and safety.

Low fuel consumption

Trawler Catamarans' outstandingly low fuel consumption is a primary attraction for many buyers who recognise the savings represented by the vessels' long range. Trawler Catamarans offer a minimum of 40 per cent reduction in fuel consumption when compared to the performance of a similarly-sized monohull.

The reduced drag created by the two hulls plus the efficient wave-piercing action contributes to greatly reduced rates of consumption and extended range – up to one thousand miles with standard fuel tanks for the entire Trawler range.

Exceptional performance, stability and comfort

Trawler Catamarans are renowned for their superior performance in challenging conditions, while maintaining excellent stability and comfort when underway. Higher speeds are achievable in tough conditions due to Trawler Catamarans' semi-displacement hull design. More of the hull remains in the water at higher speeds, softening the ride and reducing stress on the hull from wave impact.

Trawler Catamarans offer generous freeboard with reinforced hulls and bows to handle the toughest offshore conditions. The hull design offers an impressively dry deck at sea and a stable ride with minimal bounce and roll in dangerous and uncomfortable conditions. Unlike many of its competitors, Trawler Catamarans are pleasantly quiet with engines housed with their own dedicated access.

Protection and visibility

Each of the Trawler Catamarans models enjoys excellent protection from the natural elements. The 360 degree vision from the flybridge is also complemented by panoramic views from the interior cockpit, creating a light, ambient and safe experience particularly during extended passages.

Ergonomic and safe design

All of Trawler Catamarans' deck surfaces have been designed to be kept clear of obstructions, creating the safest environment for both cruising and relaxing at anchor. From boarding on the float-through transom, moving into the spacious and ergonomic cockpit, on to the square and the foredeck, moving about a Trawler Catamaran is a safe and easy experience. The boats are also equipped with superior quality steel stanchions and belting, providing optimal security for moving about on deck.



Innovative, spacious and thoughtful designs

Separation of living areas

Each Trawler Catamaran has been designed to separate the social and private areas for optimal space and serenity. Socialising and entertaining can be enjoyed in the spacious saloon and galley, which feature panoramic views, quality furnishings, abundant storage and easy integration of lounge and cockpit areas. The main decks are designed on one level so no steps up or down are required for entry from the cockpit to the main saloon.

Tranquil and private cabins

Cabins for the owner and crew are very private due to the twin hulls, with no single bulkheads required between the cabins. Fore and aft cabin arrangements can offer true three or four double cabin versions without compromising space and storage. On every model, the cabins enjoy generous dimensions, great headroom, wide passageways, and are situated well away from the engine rooms ensuring they are quiet and fume-free retreats. The cabins feature excellent ventilation systems and natural lighting, courtesy of the generous portholes. There is also spacious access to the large beds with the benefits of ensuite bathrooms.

Passageways

Unlike many catamarans, Trawler Catamarans' corridors have been designed to maximise width and height in the interior passageways, and stair dimensions have also been set at a safe and comfortable level to suit both adults and children.

Safety

Unsinkability and beachability

Trawler Catamarans have been designed to sit on their hulls without any damage to propellers, shafts and rudders due to fixed skegs. These skegs are also designed to protect the propellers, shafts and rudders and preserve the safety of the vessel in the event of an impact at sea. Twin engines in separate hulls offer peace of mind in the event of a hull taking on water due to grounding or a collision. This is a feature not possible in a monohull without major engineering works.

Trawler Catamarans



Manufactured to highest standards

Fixed fins

Trawler Catamarans are fitted with fixed fins to maximise comfort and safety. In the event of an impact or beaching, the fixed fins serve to protect the propellers, shaft and rudders, and they completely seal and preserve the integrity of the vessel. The benefits of fixed fins include total security, convenience for maintenance and greater flexibility to explore and anchor in more shallow waters.

Double drive

Trawlers Catamarans' twin engines provide yet another important guarantee of safety. Each is completely independent of each other with its own electrical circuit and fuel tank. In case of the failure of one circuit, the boat can continue utilising the other engine. With the engines and transmissions located well away from the living areas, cruising is a comfortable and quiet experience with no exposure to engine odours. Maintenance is also easy with convenient access.

Infusion process – technological excellence

All Trawler Catamarans are manufactured using a technologically-advanced infusion process. Every structure is topped with layers of tissue stuck to dry. The vacuum then ensures the resin is infused to all voids in a single pass. The numerous advantages of this process include:

- Each composite is perfectly homogeneous;
- Environmentally-friendly, taking into consideration future regulation on use of solvents;
- Employee working conditions are improved;
- Increased productivity ensuring adherence to rate of one boat per week per series;
- A noticeable gain in terms of weight compared to the manual infiltration process.

This manufacturing process exceeds the industry's standards of quality and traceability required for each boat production.



Production controls

Trawler Catamarans are built in accordance with the controls of ISO 9001 V2000. The hardness of the composite is measured on each element after a stripping process by Barcol, and an oven is used to check samples of each vessel's gel coat and laminate resistance to hydrolysis. The wear-resistance and weatherproof of ceiling and floor glue is also tested.

Once completed, the boat goes into a dedicated studio to undergo swimming pool inspections and tests. At this stage, every piece of equipment is tested and a sprinkler system verifies the entire vessel's watertightness.

Trawler Catamarans' technical team maintains a comprehensive file on every individual vessel, enabling them to provide individualised service with personalised information on every product, part, reference and process used. The exact plans for specific parts and samples of composites are also archived for future reference. Traceability is paramount to providing efficient future maintenance, and controls are in place at every stage of production to ensure compliance.

Perfectly manufactured, equipped and tested, Trawler Catamarans are then ready to sail. Hundreds of Trawler Catamarans have ably conquered the world's toughest waters, proving the quality of their production, design and seaworthiness.

Certifications

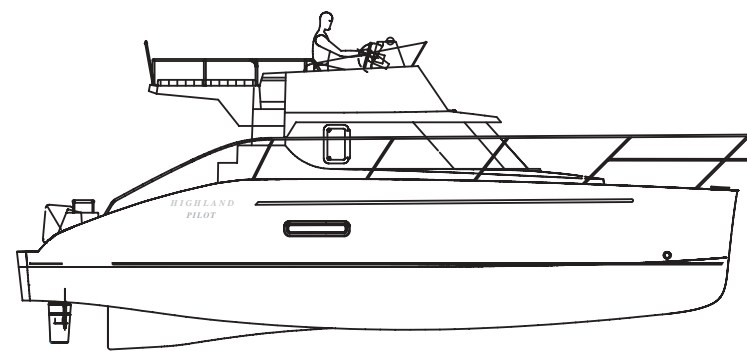
All Trawler Catamarans are certified "EC type" according to the European Directive 94/25, and they also all possess a Certificate CE.

Certification 9001 V2000

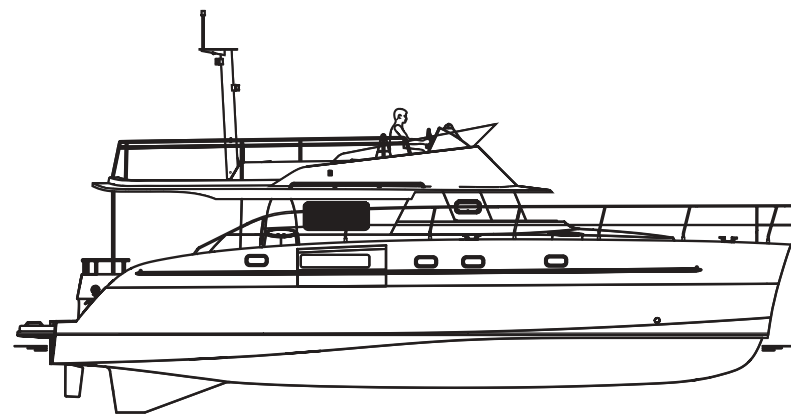
Fountaine Pajot is the first French shipyard to have obtained ISO 9001 version 2000 for the entire production cycle of its vessels. This certification is an international standard which aims to ensure optimal production quality and increase customer satisfaction by insisting on consistent upgrades to production and management processes.

The security of reputation

The Fountaine Pajot shipyard was established in 1976 and is still run by the same successful team after more than 30 years. Fountaine Pajot is publicly listed on NYSE EURONEXT Alternex Market and is the world's leading manufacturer of cruising catamarans. To date, Fountaine Pajot has built more than 2,250 power and sail cruising catamarans which are now sailing on oceans and waterways throughout the entire world.



Highland 35 Pilot



Cumberland 46



Summerland 40



Queensland 55

Trawler Range

Power Cruising range

Trawlers Catamarans' range of power catamarans represents the pinnacle of boating excellence, combining outstanding offshore performance, cutting-edge technology and exceptional fuel consumption rates.

Designed by the renowned team of architects, Joubert Nivelt, Trawler Catamarans have capably taken on the world's toughest waters with more than 200 vessels delivered. These owners have conquered the English Channel, North Sea, Bay of Biscay, Golf Stream, trade routes plus the Indian and Southern Oceans in the last ten years.

Trawler Catamarans are available in a range of sizes and interior layouts to cater for every client's individual requirements, making them perfect for day trips, weekend sailing, coastal and offshore cruising.

Today, the company offers an exciting, up-to-date range of power catamarans comprising the Highland 35 Pilot, Summerland 40, Cumberland 46 and the Queensland 55. Specifications, layouts and information on these models are detailed in the following pages.



Flagship Class

Flagship Class

Trawlers Catamarans' Flagship Class presents the most exclusive power cruising catamarans to the market, defined by majestic lines, superior quality of finish and a luxurious level of comfort. Designed by the internationally renowned firm Joubert Novoult, the Flagship Class exudes timeless style without compromising performance and safety standards.

Trawlers Catamarans' Flagship Class of power catamarans includes the impressive Cumberland 46 and the brand new Queensland 55 which offer an unparalleled level of design, performance and comfort. Weekend or long-distance cruising is a pleasure with their exceptional fuel economy, spacious and ambient saloons, generous and impeccably furnished cabins and expansive gourmet galleys designed for entertaining.

Owner's version

Offering the ultimate in privacy for both owners and guests, the Maestro version is offered on all models in the Trawler Catamarans range. This design, which dedicates an entire hull for owner's private use, is the result of extensive research and development in conjunction with consultants, architects and manufacturers.

Highland 35 Pilot

Exceptional volumes, modern lines and an innovative design make the Highland 35 Pilot an outstanding craft in its category. Boasting excellent stability, safety and seagoing capabilities in keeping with the entire Fountaine Pajot Trawler range, the Highland 35 Pilot remains stable and comfortable, whatever her speed.

Offering an outstanding 40 per cent reduction in fuel consumption compared to other vessels in its class, the Highland 35 Pilot represents unbeatable value for money. To achieve the same speed as the Highland 35 Pilot with its standard 75hp motors (larger optional), a monohull of the same size can need a lot more horse power.

The Highland 35 Pilot is extremely stable at anchor with minimal rolling even in inclement weather, while also offering excellent stability, performance, safety and longer range at sea. Its two engines afford great maneuverability and the spacious flybridge makes handling a pleasure.

Key features include an extremely practical integrated pilot post and an impressive host of electronic packs. The super flybridge features seating for six, and the outdoor zone also has an expansive sunbathing platform with a luxuriously thick mattress (2.20m x 1.40m) and an ergonomic helm station. Whether underway or at anchor, this spacious area always enjoys panoramic views.

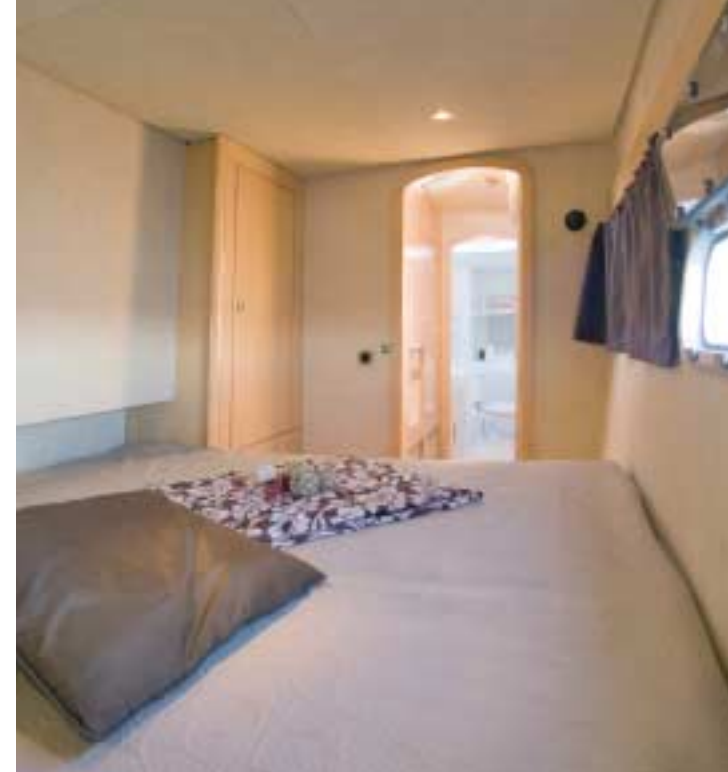


The main deck has a sheltered cockpit measuring more than nine square metres. Opening directly onto the saloon, it is perfect for alfresco dining or passage planning. Sheltered from sun and wind, you can dine comfortably with easy direct access to the galley via the servery hatch.

The Highland 35 Pilot has a luminous and elegant interior design with light woodwork, stylish soft furnishings and a stunning dark parquet-style floor. The saloon exudes a light and airy ambience with spectacular views provided through the large picture windows. Space has been thoughtfully allocated to clearly distinguish between the dining area, galley and chart table/desk. There are also ingenious and spacious stowage areas for longer cruising trips.

Available in two versions – Trio or Duo – the Highland 35 Pilot is designed to suit the lifestyle requirements of all clients. The Trio features a separate Master Statesroom in the starboard hull with ample storage, study area and bathroom, while the portside hull comprises two spacious guest cabins. The Duo version features a generous double cabin in each hull, along with separate bathrooms.





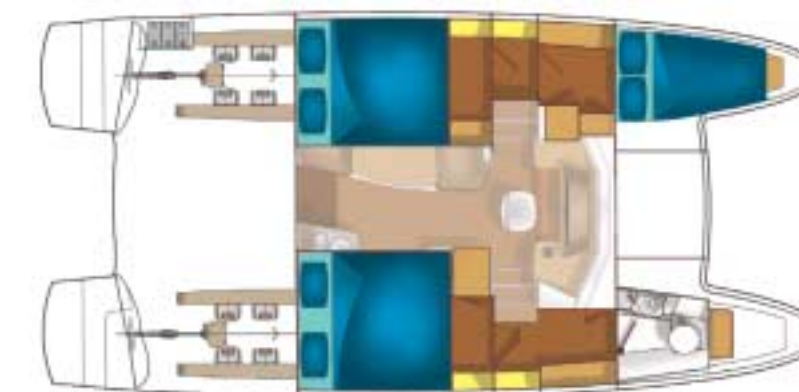
Highland 35 Pilot

Specifications

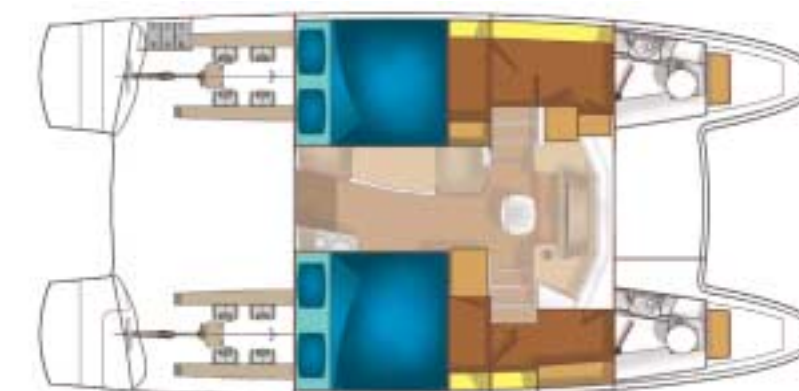
LOA	10.35 m / 34 ft
Beam	4.40 m / 14.43 ft
Draft	0.95 m / 3.12 ft
Full Load Displacement	6.3 tonne
Engines	2 x 75 hp - larger optional
Fuel/Diesel	2 x 400 litre - larger optional
Freshwater	300 litre - larger optional

Range Chart

	Engines	Speed	Consumption	Fuel Range
Eco Cruise Speed	Volvo D2-75 ch/hp	7 kt	2 x 2.8 ltrs/hr	1000 miles
Fast Cruise Speed	Volvo D2-75 ch/hp	13 kt	2 x 12 ltrs/hr	440 miles
Full Throttle	Volvo D2-75 ch/hp	16.5 kt	2 x 18 ltrs/hr	380 miles
	Engines	Speed	Consumption	Fuel Range
Eco Cruise Speed	Volvo D3-110 ch/hp	7 kt	2 x 2.8 ltrs/hr	1000 miles
Fast Cruise Speed	Volvo D3-110 ch/hp	16 kt	2 x 13 ltrs/hr	490 miles
Full Throttle	Volvo D3-110 ch/hp	20 kt	2 x 21 ltrs/hr	380 miles



Standard Version



Owner's Version

Summerland 40

Trawler's revolutionary new Summerland 40 has already made waves with power catamaran enthusiasts all over the world.

Featuring the superior characteristics for which the company's Trawler range is already renowned, the Summerland 40 has a state-of-the-art design, autonomous controls, outstanding fuel consumption and exceptional offshore ability.

Designed by Coste & Partners under the architectural guidance of Joubert/Nivelt, the Summerland 40 also boasts a generous freeboard and high bridge deck clearance to provide a quieter and dryer ride than competitors in most sea conditions.

The Trawler's two powerful hulls ensure excellent stability while eliminating dangerous and uncomfortable rolling. Incomparable fuel consumption of 40 per cent less than other boats in its class is a result of the Summerland 40's generous tanks and innovative hull design.

Designed for optimal safety and comfort, the deck spaces are ergonomic and obstacle-free providing easy access to all areas. With a sundeck, generous seats, a maindeck helmstation plus flybridge, the Summerland 40 is a welcome innovation in power catamaran design.

An arc-style stairwell leads up to the flybridge from the cockpit, and this area may be cordoned off for maximum safety with the thick glass hatch.



The flybridge is a retreat in its own right; its queen-size sun lounge and luxuriously padded backrest on posts for lounging about make it a popular haven for idyllic cruising. The flybridge helm seat is double bench style with an aft-facing passenger seat, and the skipper has exceptional visibility from all aspects.

Entertaining is a breeze with the saloon and cockpit seamlessly integrated, providing easy access all on one level and control over natural ventilation through the interior. The well-appointed galley with plenty of cupboard space overlooks the light-filled saloon and dining area, which comfortably seats up to eight guests.

The interior helmstation features a sleek console and comfortable seating with footrest for the comfort of an additional passenger, plus strategically-positioned porthole for optimal ventilation. The generous navigation table is large enough for multiple charts and paperwork to be unfurled without clutter.

The Summerland 40 also boasts an exclusive Owner's Suite on the starboard hull furnished with a raised queen-sized island bed affording spectacular sea views, huge storage space, office desk, dressing table and a private bathroom. In the port hull, guests can relax in privacy and tranquillity with two separate cabins featuring double or twin beds, shelves, bathroom and ample storage space for convenience on extended cruises.





Summerland 40

Specifications

LOA	12.00 m / 40 ft
Beam	5.40 m / 17.70 ft
Draft	1.07 m / 3.51 ft
Full Load Displacement	12 tonne
Engines	2 x 160 hp - larger optional
Fuel/Diesel	2 x 700 litre - larger optional
Freshwater	600 litre - larger optional

Range Chart

	Engines	Speed	Consumption	Fuel Range
Eco Speed	Volvo D3-160 cv/120kw	7.5 kt	2 x 5.3 ltrs/hr	1000 miles
Fast Speed	Volvo D3-160 cv/120kw	13.5 kt	2 x 18.9 ltrs/hr	500 miles
Full Throttle	Volvo D3-160 cv/120kw	18.7 kt	2 x 32.8 ltrs/hr	400 miles
	Engines	Speed	Consumption	Fuel Range
Eco Speed	Volvo D3-160 cv/140kw	7.5 kt	2 x 5.3 ltrs/hr	1000 miles
Fast Speed	Volvo D3-160 cv/140kw	13.5 kt	2 x 19 ltrs/hr	500 miles
Full Throttle	Volvo D3-160 cv/140kw	20 kt	2 x 40 ltrs/hr	350 miles



Standard Version



Flagship Class

Cumberland 46

One of the prestigious models in the Flagship Class of Fountaine Pajot's Trawler range, the Cumberland 46 sets a new industry benchmark for offshore power catamarans. This stunning catamaran has enjoyed international acclaim for its exceptional range, spaciousness, comfort and superior seaworthiness.

Designed by world-renowned architects, O. Flahault and Joubert/Nivelt, the Cumberland 46 will particularly appeal to long-haul cruising enthusiasts who value true fuel economy, with the standard engines offering a range of 1,000nm at 8 knots (14 litres per hour).

The Trawler's characteristic white body has powerful hulls fitted with expansive picture windows plus a very spacious upper deck from where the helmsman's eye is more than four metres above water level, affording a sweeping 360 degree view.

With majestic lines, the space aboard the Cumberland 46 is incomparable with three decks totalling 120m². The cockpit is exceptionally large and features bench seating around a pedestal table, making it ideal for comfortable long cruising. The flybridge is an impressive expanse with benches and a finely crafted wood side table plus benches near the helming station. Joubert and Nivelt have created an innovative stern that features a deflector and spray rails to eliminate spray and decrease the stem wave on both sides.



The interior is roomy, congenial, ergonomic and comfortable employing top of the line materials and distinctive touches. The light-filled saloon has a 360 degree panoramic view featuring two separate saloons: a main one for meals with a table seating eight, and a second one inside near the helming station.

Boasting an excellent amount of storage space, the fully fitted galley is bedecked in finely crafted timbers and also features a stylish counter top that effectively separates the work area from the living space without interrupting social interaction.

The cabins are set privately in each hull with a choice of layouts to cater for the individual requirements of private and charter use. The Maestro version features a capacious suite with excellent storage, shelving, private bathroom and generous passageways. The two guest cabins in the starboard hull are light-filled and roomy, each with their own dedicated bathroom.

The standard four-cabin version is ideal for families or charter use, with large cabins featuring double or twin beds, four private bathrooms and extensive storage for long term cruising.





Flagship Class

Cumberland 46

Specifications

LOA	13.95 m / 45.77 ft
Beam	6.55 m / 21.50 ft
Draft	1.20 m / 3.94 ft
Full Load Displacement	14 tonnes
Engines	2 x 225 hp - larger optional
Fuel/Diesel	2 x 800 litre - larger optional
Freshwater	2 x 350 litres - larger optional

Range Chart

	Engines	Speed	Consumption	Fuel Range
Eco Speed	Volvo D4-225 CH	8 kt	2 x 7.5 ltrs/hr	850 miles
Fast Speed	Volvo D4-225 CH	14 kt	2 x 27 ltrs/hr	415 miles
Full Throttle	Volvo D4-225 CH	19.5 kt	2 x 49 ltrs/hr	315 miles
	Engines	Speed	Consumption	Fuel Range
Eco Speed	Volvo D4-225 CH	8 kt	2 x 7.5 ltrs/hr	850 miles
Fast Speed	Volvo D4-225 CH	18 kt	2 x 36 ltrs/hr	400 miles
Full Throttle	Volvo D4-225 CH	24 kt	2 x 58 ltrs/hr	330 miles
	Engines	Speed	Consumption	Fuel Range
Eco Speed	Volvo D4-330 CH	8 kt	2 x 7.5 ltrs/hr	850 miles
Fast Speed	Volvo D4-330 CH	20 k	2 x 40 ltrs/hr	400 miles
Full Throttle	Volvo D4-330 CH	26.5 kt	2 x 66 ltrs/hr	320 miles



Standard Version



Owner's Version

Flagship Class

Queensland 55

The spectacular Queensland 55 is the latest addition to the company's prestigious Flagship Range and offers outstanding performance in offshore conditions, impressive maneuverability, exceptional fuel consumption rates and very long range.

Designed for extended cruising, the Queensland 55 is a veritable cruising apartment with generous saloon and dining areas, a gourmet galley and state-of-the-art navigation room.

The deck areas are incomparable offering a choice of zones for entertaining including a very spacious aft cockpit with teak dining table and an independent front deck saloon. On the upper deck, the flybridge has been designed as a fabulous retreat for the skipper and guests. The steering station is spacious with excellent visibility, while guests can relax in maximum comfort with the Queensland 55's saloon, outdoor galley and sundeck.

Available in two layouts for private or charter use, the Queensland 55's Maestro version boasts a magnificent Owner's suite that occupies an entire hull with private access, two luxurious guest cabins and a separate crew cabin. All cabins are very private with considerable storage space, king size beds and ocean views through large port holes. The standard version of the Queensland 55 offers four carefully appointed cabins plus convenient crew quarters.



A refined yet relaxed ambience has been created throughout the boat courtesy of luxury fittings and fixtures including the finest decking and panelling, special lighting and contemporary furnishings.

A product of the world's most experienced architects and designers, the Queensland 55 excels in rugged conditions, absorbing big waves easily and covering long passages in a short time with incredibly modest fuel consumption rates. At anchor or underway, the catamaran is remarkably stable with no rolling, offering the perfect cruising experience for short or long term voyages.





Flagship Class

Queensland 55

Specifications

LOA	16.75 m / 56.60 ft
Beam	7.80 m / 25.6 ft
Draft	1.10 m / 3.60 ft
Full Load Displacement	22 tonne
Engines	2 x 435 hp - larger optional
Fuel/Diesel	3000 litres - larger optional
Freshwater	1000 litres - larger optional

Range Chart

	Engines	Speed	Consumption	Fuel Range
Eco Speed	Volvo D6-435 CV	9.5 KT	2 x 14 ltrs/hr	1200 miles
Fast Speed	Volvo D6-435 CV	15 KT	2 x 50 ltrs/hr	450 miles
Full Throttle	Volvo D6-435 CV	20 KT	2 x 83 ltrs/hr	360 miles
	Engines	Speed	Consumption	Fuel Range
Eco Speed	Volvo D11-670 CV	9.5 KT	2 x 15 ltrs/hr	1000 miles
Fast Speed	Volvo D11-670 CV	18 KT	2 x 60 ltrs/hr	430 miles
Full Throttle	Volvo D11-670 CV	24 KT	2 x 120 ltrs/hr	290 miles



Standard Version



Owner's Version

Charter Investment



Charter industry overview

The bareboat and crewed charter boat holiday industry is experiencing exciting growth, both in Australia and throughout the world. From its origins in the Mediterranean and Caribbean in the early '70s, the charter industry has flourished with charter fleets successfully operating from some of the world's most beautiful sailing grounds. Approximately 90 per cent of the boats operating in the charter fleets are not owned by the charter companies. They are owned by private individuals who operate their boats as a business to generate financial returns while also making use of their boat for regular holidays afloat.

The most common use is for week-long sailing holidays typically known as "bareboat charters", which operate within Australia and around the world. "Bareboat" basically means chartering a boat without crew, which is the most popular option for clients with sailing experience who want to explore a cruising area with their own friends or family at their own pace.

Where do charter boats operate from?

Yachts can be chartered in areas such as Sydney Harbour, the Whitsundays, Fraser Island and Pittwater in Australia and other exotic cruising areas such as Tonga, Tahiti, New Caledonia, Phuket and Koh Samui in Thailand, Langkawi in Malaysia, Greece, Turkey and Croatia in the Mediterranean, and the ever popular islands of the Caribbean.

Are catamarans popular charter boats?

Throughout the charter fleets worldwide, it is a fact that catamarans are becoming the most popular charter boats. Apart from their fantastic sailing performance, hiring a catamaran offers the following advantages over chartering a monohull:

- Firstly, you can't go past the abundance of extra space both above and below decks. Catamarans can comfortably accommodate up to 12 people depending on the boat's size.
- They provide a stable platform while underway and when anchored. At anchor, there is no rolling around, guaranteeing a peaceful night's sleep with no slapping on the hulls chines from the ocean.
- Catamarans have a much shallower draft than monohulls which allows anchoring close to shore in the most protected anchorages accessible.
- More cabin, storage and living areas and twice the deck space than traditional monohulls.
- Ease of handling - two engines making manoeuvring a breeze.





Charter Investment

What type of multihulls fit best into charter?

Multihull Solutions understands most of the world's charter regions, its charter operators and how they run their businesses. Some operators' management style may not suit you, while other are an ideal fit. Often overlooked is that the boat you are considering to purchase may not suit that particular operator's customer base.

There are many issues to consider: boat size, layout, equipment, term of charter management, location, market conditions, operator's target market, and both the operator's and owner's expectations.

Above all, you need to determine whether your boat be considered a "full charter boat business" or a "hobby based business" by the Australian Taxation Office. This is the most important first step. We can make sure your boat is in the right location and with the most suitable operator for your particular boat, so you can enjoy the business!

What we offer

The Multihull Solutions team has worked with the charter boat industry for over 15 years and understands the position of both the boat owner and the operator. Like any relationship, the most important initial consideration is to find the right balance.



Multihull Solutions can assist you in sourcing and buying the right new or pre-owned multihulls to fit into a charter fleet. We have close relationships with the most reputable charter companies to ensure your asset is well maintained and looked after at all times.

We also offer a range of quality pre-owned charter yachts for sale. We have a wide range of catamarans for sale for either continued use in a charter boat holiday company or for placement into private use.

Multihull Solutions works with well respected finance company, Finlease, to assist with understanding financing of your yacht, and Oceanic Insurance Brokers to assist with boat insurance.

Summary

Buying a multihull for commercial operation is not a simple process, so we strongly recommend you take your time and complete all due diligence. We also suggest that you don't make a decision to buy based solely on price and your personal preferences - the boat is the business and must be a compromise to ensure it meets all requirements for business success.

For more information on charter investment, please don't hesitate to contact us or visit our website

www.multihullsolutions.com.au

Why Fountaine Pajot?

- Safety – Fountaine Pajot catamarans are rated as “unsinkable.”
- Performance / cruiser – each has an excellent balance of performance and comfort.
- Ease of use – all sailing catamarans are designed for easy handling by just one or two persons.
- Design and technology – Fountaine Pajot’s team of internationally renowned architects, designers and builders is continually improving the range to combine the very latest in design and technology.
- Value for money – Fountaine Pajot catamarans offer proven, stylish designs and outstanding performance at an affordable price.
- Global brand – Fountaine Pajot catamarans are recognised internationally ensuring you enjoy worldwide service and support, plus easy availability of spare parts when required.

Fountaine Pajot’s range of premier cruising catamarans offer an unparalleled combination of performance and comfort. With stylish designs featuring sleek lines and stunning contemporary interiors, each model is carefully appointed to make every voyage a pleasure.

Trawler
— C A T A M A R A N S —
by
Fountaine Pajot

Shipping

Fountaine Pajot catamarans are sailed/powered from the factory in France across the English Channel to Southampton where they are disassembled and loaded aboard selected suitable ships. This “sea trial” ensures all systems are in proper working order before the vessel is delivered to Multihull Solutions.

On arrival in Australia or New Zealand, Multihull Solutions oversees the transfer of the vessel from the ship to the dock and its launch into the water, where our team then handles the full commissioning process (eg. standing of mast, fitting of sails, biminis, electrical and gas compliance etc). A Multihull Solutions sales representative then manages all inspections and sea trials with the client before handing the vessel over.

If clients prefer to collect their vessel personally from the factory in France and make their own way back to Australia/ New Zealand, ex-factory handovers can also be arranged.

For more information, please contact us or visit our website at

www.multihullsolutions.com.au



www.fountainepajot.com.au



Multihull Solutions Australia

33-45 Parkyn Parade, Mooloolaba, QLD, Australia 4557

Tollfree 1300 855 338

International +61 (0) 7 5452 5164

Fax +61 (0) 7 5444 3792

Email info@multihullsolutions.com.au

Multihull Solutions New Zealand

9 Westhaven Drive, Westhaven, Auckland, New Zealand

Tollfree 0508 MULTIS (0508 68 58 47)

International +64 (0) 9 903 1000

Email office@multihullsolutions.co.nz

www.multihullsolutions.com.au

Trawler
— CATAMARANS —
by
Fountain Pajot


multihull
SOLUTIONS